

# Pond Plants

Please keep our natural waterways safe by keeping water plants contained to artificial ponds and bowls.

- 1= Potentially weedy/ fast grower
- 2= tolerates heavy or clay soil
- 3= bogs and ponds
- 4= tolerates temporary inundation
- 5= Prefers a sunny moist position
- 6= Prefers a moist part shade position
- 7= Ornamental/ Attractive flowers
- 8= Frog habitat

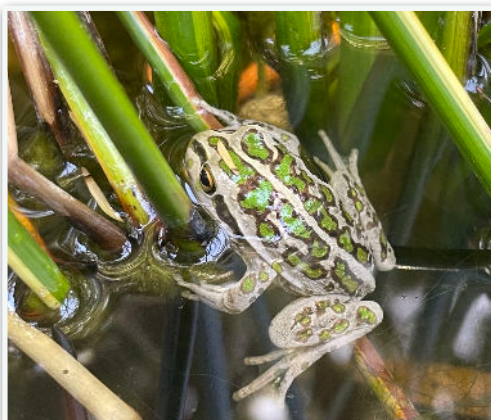


## Edge Plants

|                            |                  |
|----------------------------|------------------|
| Lomandra longifolia        | 2, 4, 5, 6, 8    |
| Lepidosperma longitudinale | 2, 3, 4, 6, 8    |
| Lepidosperma gladiatum     | 2, 5, 8          |
| Goodenia humilis           | 2, 3, 4, 6, 7    |
| Phylidrum lanuginosum      | 3, 4, 5, 7, 8    |
| Juncus pallidus            | 2, 3, 4, 6, 8    |
| Juncus polyanthemus        | 2, 3, 4, 6, 8    |
| Beumea preissii            | 2, 3, 4, 5, 6, 8 |
| Beumea rubiginosa          | 2, 3, 4, 5, 6, 8 |
| Ficinia nodosa             | 1, 2, 3, 4, 6, 8 |
| Isolepis cernua            | 3, 5, 8          |
| Leptospermum 'Merinda'     | 2, 6, 7          |
| Dianella cerulea           | 2, 4, 6, 7       |
| Leptocarpus scariosus      | 2, 3, 5, 6       |
| Cyperus exaltatus          | 1, 2, 3, 4       |
| Triglochin striata         | 2, 3, 4          |

## Submerged Plants (20-40cm depth)

|                               |            |
|-------------------------------|------------|
| Marsilea drummondii           | 1, 2, 3, 4 |
| Marsilea mutica               | 1, 2, 3, 4 |
| Mazus pumilio                 | 2, 3, 4, 6 |
| Nymphoides geminata           | 3, 5, 7, 8 |
| Nymphoides crenata            | 3, 5, 7, 8 |
| Nymphoides indica 'Snowflake' | 3, 5, 7, 8 |
| Triglochin procera            | 3, 8       |



## Marginal and Bog Plants

|                            |               |
|----------------------------|---------------|
| Aethionema cordifolium     | 1, 5          |
| Bacopa monnieri            | 1, 3, 5, 7    |
| Samolus repens             | 3, 4, 6, 7    |
| Ludwigia palustris         | 3, 5          |
| Lobelia aniceps            | 2, 3, 4, 6    |
| Hydrocotyle sibthorpioides | 2, 3, 5       |
| Lysimachia nummularia      | 1, 3, 5, 6, 7 |
| Lilaeopsis brisbanensis    | 1, 3, 5       |
| Villarsia reniformis       | 2, 3, 7       |
| Villarsia parnassifolia    | 3, 6, 7       |
| Centella asiatica          | 3, 4, 5       |
| Centella cordifolia        | 3, 4          |

## Deep Submerged Plants (50cm-1.5m depth)

|                           |         |
|---------------------------|---------|
| Nymphaea violacea         | 3, 5, 7 |
| Vallisneria erecta        | 3       |
| Schoenoplectus mucronatus | 2, 3    |
| Schoenoplectus vallidus   | 2, 3    |

## Oxygenator Plants

These plants filter nutrients and provide oxygen to the pond during the day time.

Vallisneria  
 Bacopa monnieri  
 Bacopa caroliana  
 Myriophyllum crispatum  
 Acorus graminous  
 Acorus calamus  
 Native water lilies  
 Ranunculus inundatus

## References

Grow What Where book Natalie Peate  
<https://gardeningwithangus.com.au>  
 Atlas of Living Australia - [bie.ala.org.au](http://bie.ala.org.au)  
<https://florabase.dbca.wa.gov.au>  
 Agriculture WA <https://www.agric.wa.gov.au>